

# cirrus

TRUCK CAMPERS



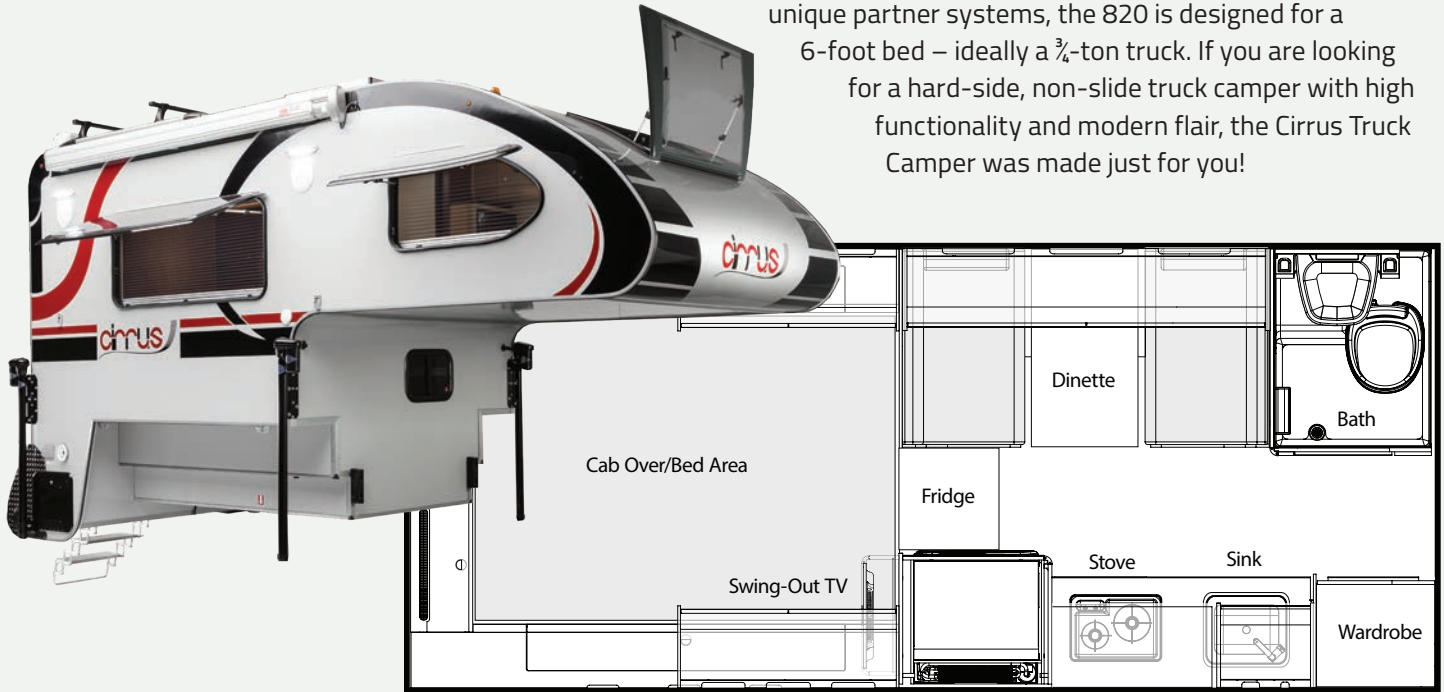
[cirrus.nucamprv.com](http://cirrus.nucamprv.com)





# 820 Truck Camper

With its modern, forward-thinking aesthetics and unique partner systems, the 820 is designed for a 6-foot bed – ideally a ¾-ton truck. If you are looking for a hard-side, non-slide truck camper with high functionality and modern flair, the Cirrus Truck Camper was made just for you!



Kitchen



Dinette



Wet Bath



Alde® Heat System  
Efficient Hydronic System  
for even, comfortable heat



FROLI™ Sleep System  
Better Support and  
Incredible Comfort



Queen Size Bed



Dual Tank Compartment



Plumbing Control Panel

# 820 Features: Exterior



## Exterior

- Seamless Aluminum Roof
- 100% Aluminum Framed Body
- Laminated & Bonded Azdel™ Sidewalls

### Four-Season Camper:

- Insulated LP Compartment
- Heated & Insulated Subfloor
- Insulated Doors & Windows
- Reico Titan Electric Jacks w/ Remote

## Driver Side

- HDTV Omni-Directional Dish (Roof)
- Dual LP Tank Compartment
- Cable Coaxial
- Water & Electric Hookups
- Central Plumbing Control Panel
- Exterior Shower
- Large Storage Compartment
- LED Docking Lights
- LED Marker Lights

## Passenger Side

- FIAMMA™ Motorized 8' Awning
- Exterior Speakers
- Dual Battery Compartment (Up to Group 31) w/ Disconnect
- LED Patio Lights
- LED Marker Lights
- 110V Patio Outlet
- Coleman-Mach 8 A/C (Roof)

## Rear View

- Specialized ABS Cap
- LED Porch Lights
- LED Marker Lights
- Custom Diamond Plate Bumper w/ Hose Storage
- Swing-Out Entry Assist Handle
- FIAMMA™ Fold-Up Access Ladder
- Custom Door w/ Portal Window
- Keyless Entry



# 820 Features: Interior

## Cabover

- 60" x 80" Queen Bed
- FROLI™ Sleep System
- LED Lights
- Storage Hampers & Cabinets
- Overhead Cabinetry & Headboard w/ Outlets
- Tinted, Operational Side & Stargazer Windows
- TV Cabinet & Speakers

## Wet Bath

- Alde® Radiant Heat Panel
- Fold-Out Vanity Sink
- Large Mirror
- Shower Curtain
- Foldaway Towel Rod
- Fan-Tastic Fan EZ-Breeze
- Aqua Magic Low Profile Thetford Toilet

## Kitchen

- 2-Burner Glass-Top Stove
- Glass-Top Sink
- Ambient-Lit Backsplash
- 5.5 Cu. Ft. 3-Way Fridge
- Microwave
- Central Systems Control Panel

## Dinette

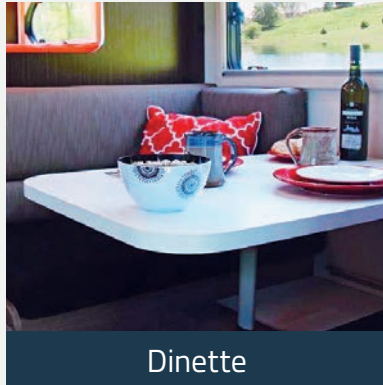
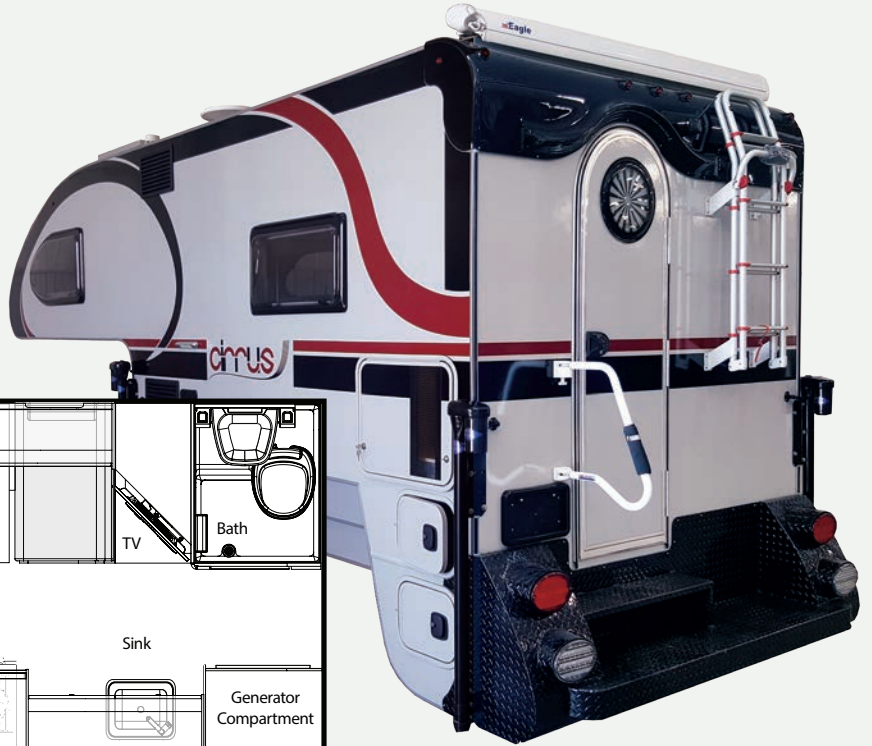
- Two-Person Face-to-Face Dinette
- Fold-Down Overhead Cabinetry
- 12V/USB Outlets
- Overhead LED Lights
- FAWO Rail System





# 920 Truck Camper

The Cirrus 920 is a must-have for anyone looking for a hard-side, non-slide, luxurious truck camper. The Cirrus 920 has all the same unique features as the Cirrus 820 but with more room and greater features.



# 920 Features: Exterior



## Exterior

- Seamless Aluminum Roof
- 100% Aluminum Framed Body
- Laminated & Bonded Azdel™ Sidewalls
- Coleman-Mach 8 A/C (Roof)

## Four-Season Camper:

- Insulated LP Compartment
- Heated & Insulated Subfloor
- Insulated Doors & Windows
- Reico Titan Electric Jacks w/ Remote

## Driver Side

- HDTV Omni-Directional Dish (Roof)
- Cable Coaxial
- Water & Electric Hookups
- Central Plumbing Control Panel
- Exterior Shower
- Large Storage Compartment (Pre-wired for Generator)
- LED Docking & Marker Lights



## Passenger Side

- FIAMMA™ Motorized 8' Awning
- Exterior Speakers
- LED Patio Lights & Marker Lights
- 110V Patio Outlet
- Sliding Dual LP Tank Compartment

## Rear View

- Specialized ABS Cap
- LED Porch Lights & Marker Lights
- Custom Diamond Plate Bumper w/ Hose Storage
- Swing-Out Entry Assist Handle
- FIAMMA™ Fold-Up Access Ladder
- Custom Door w/ Portal Window
- Keyless Entry

# 920 Features: Interior

## Cabover

- 60" x 80" Queen Bed
- FROLI™ Sleep System
- LED Lights
- Storage Hampers & Cabinets
- Overhead Cabinetry & Headboard w/ Outlets
- Tinted, Operational Side & Stargazer Windows

## Wet Bath

- Alde® Radiant Heat Panel
- Fold-Out Vanity Sink
- Large Mirror
- Shower Curtain
- Foldaway Towel Rod
- Fan-Tastic Fan EZ-Breeze
- Aqua Magic Low Profile Thetford Toilet
- Built-In Storage Cabinet

## Kitchen

- Glass-Top Sink
- Ambient-Lit Stainless Steel Mosaic Tile Backsplash
- Central Systems Control Panel
- 2-Burner Cast Iron Cook-Top
- 5 Cu. Ft. 3-Way Fridge with Pull-Out Pantry
- 1000 Watt Microwave/ Convection Oven
- 3-Speed Fan-Tastic Fan

## Dinette

- Two-Person Face-to-Face Dinette
- Fold-Down Overhead Cabinetry
- 12V/USB Outlets
- Overhead LED Lights
- FAWO Rail System
- 28" TV & Entertainment Center w/ Storage & Drawers



# Specifications



	Cirrus 820	Cirrus 920
Floor Length	8' 6"	10' 1"
Overall Length	17' 4"	18' 10"
Overall Height	8' 7"	8' 7"
Exterior Height	7' 7"	7' 7"
Interior Height	6' 6"	6' 6"
Cabover Height	3' 6"	3' 6"
Center of Gravity	32"	43" (w/o Generator) 45" (w Generator)
Body Width	7' 2" (w/o Jacks) 8' 2" (w Jacks)	7' 2" (w/o Jacks) 8' 2" (w Jacks)
Fresh Tank	38 gal	38 gal
Gray Tank	32 gal	32 gal
Black Tank	18 gal	18 gal
Fridge	5.0 cu. ft	5.0 cu. ft
Propane	Two 20-lb Tanks	Two 20-lb Tanks
Dry Weight	2,540 lbs	2,905 lbs
Alde® Radiant Heat	11,000-18,000 BTU	11,000-18,000 BTU
Air Conditioner	9,000 BTU	9,000 BTU
Battery (Up to Group 31 Disconnect)		Two 6v AGM (220 Amp)

# Cirrus Truck Camper Options



TORKLIFT™ GlowSteps

- **TORKLIFT™ GlowSteps:**  
Lockable and easy to store, these steps are made from Aircraft Grade Aluminum.

- **Maggie Roof Rack:**  
Have gear that doesn't fit inside? No problem! This works with any THULE® or YAKIMA® product.

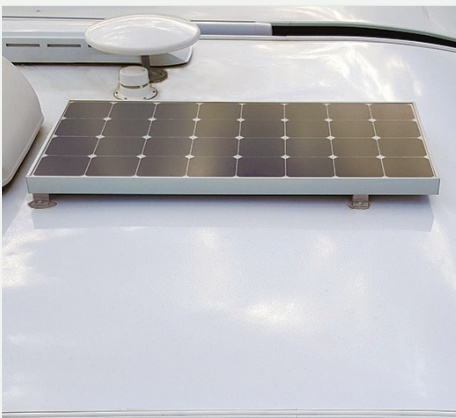
- **200 Watt Solar Kit:**  
Staying off grid for a while? Grab an extra 50-60 amps a day with this system.

- **Lagun Table Base with 20"x25" Table Top:**  
Big enough to fit the family for dinner and fun.

- **FIAMMA™ Rear Awning:**  
This 6' self-supporting awning will protect you and your guests from rain.

- **Wireless Rear Camera:**  
Whether you use it for back-up assistance or security, this camera is extra handy!

- **Pass-Thru Window:**  
Looking for the convenience of accessing your truck cab for additional device support or small pet access? If so, this 12"x19" sliding window has you covered!



200 Watt Solar Kit



FIAMMA™ Rear Awning

## Additional features for the Cirrus 920



Slide-In Oven



Onan Generator



Cabover 19" Corner TV

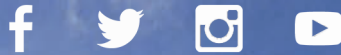


nüCamp RV manufactures the highest quality recreational vehicles and truck campers available in North America. Our dedicated craftsmen and women are committed to the principles of integrity and excellence. We have learned that this is a recipe for creating fanatical customers that we treat like part of the nüCamp family; that's our commitment to you.

For over a decade as a dedicated manufacturer of these luxurious and high quality campers, Pleasant Valley Teardrop Trailers adopted the name nüCamp RV in the fall of 2016. We feel that the new brand captures and expresses the essence of our company's commitment to RVers, campers, and outdoor enthusiasts – Happy travels and hope to see you on the road!

PO Box 395 | 661 Belden Parkway | Sugarcreek, OH 44681

844.823.9112 | [nucamprv.com](http://nucamprv.com)



[cirrus.nucamprv.com](http://cirrus.nucamprv.com)