

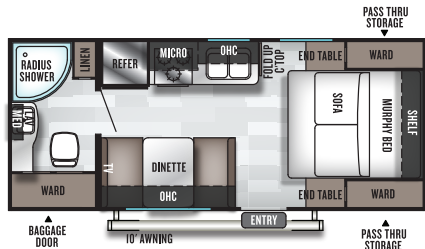
SALEM CRUISE LITE



SALEM
CRUISE
LITE

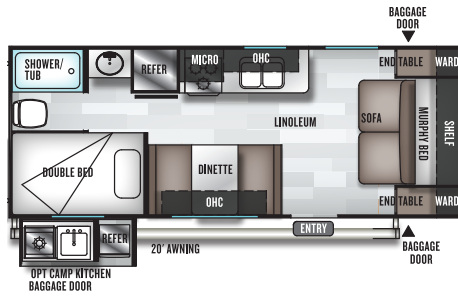
BY FOREST RIVER





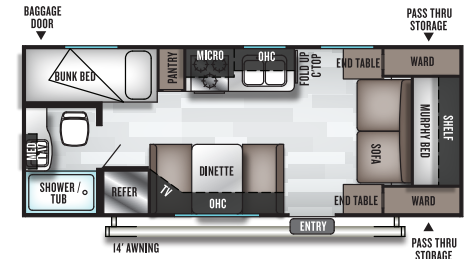
171RBXL

UVW = 3798



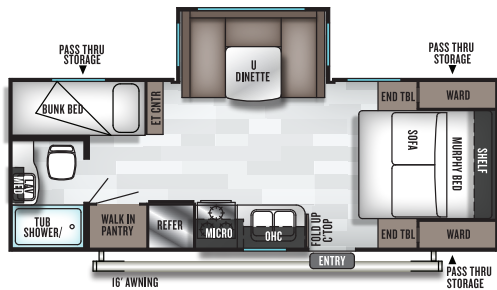
19DBXL

UVW = 4380



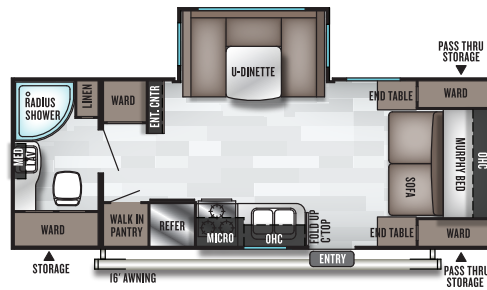
201BHL

UVW = 4195



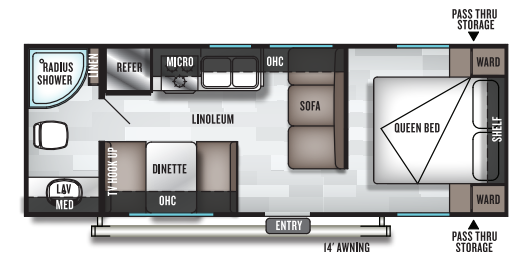
230BHL

UVW = 4903



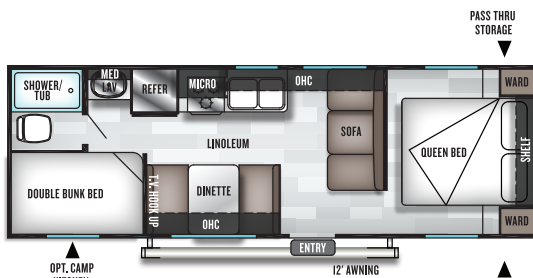
233RBXL

UVW = 4895



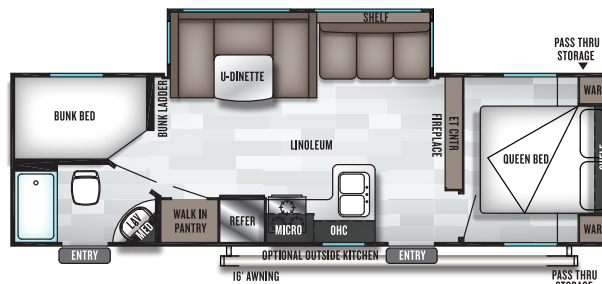
241QBXL

UVW = 4135



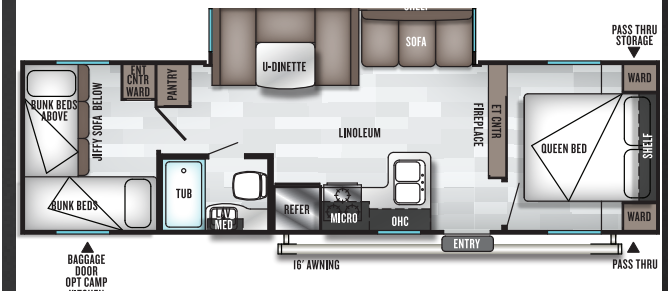
261BHL

UVW = 4314



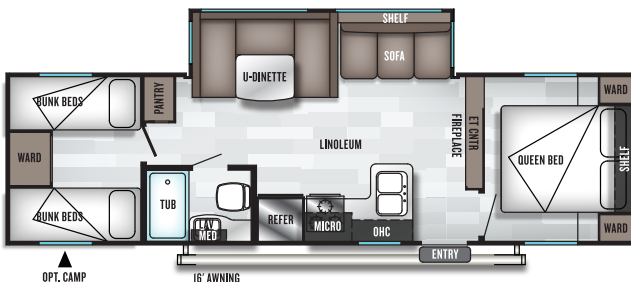
263BHL

UVW = 5816



273QBXL

UVW = 5937



282QBXL

UVW = 6155

	171RBXL	19DBXL	201BHL	230BHL	233RBXL	241QBXL	261BHL	263BHL	273QBXL	282QBXL
UVW	3798	4380	4195	4903	4895	4135	4314	5816	5937	6155
Hitch Wt.	521	520	528	694	716	499	434	682	680	636
Carrying Capacity	3685	3102	3295	2753	2783	3326	3082	1828	1705	1443
Ext. Length	22'5"	24'8"	23'7"	25'10"	26'3"	26'11"	29'1"	31'5"	33'3"	32'11"
Ext. Height	10'1"	10'1"	10'1"	10'4"	10'6"	10'1"	10'1"	10'4"	10'4"	10'4"
Fresh Water	38	38	38	38	38	38	38	38	38	38
Gray Water	30	28	30	30	30	40	30	60	32	30
Black Water	30	30	30	30	30	30	30	30	34	30
Tire Size	14"	14"	14"	14"	14"	14"	14"	14"	14"	14"

360° TOURS



<https://i.ead.me/bblxl>



263BHXL (SHOWN IN MARBLE DECOR)



171RBXL (SHOWN IN OYSTER DECOR)

DETAILS MATTER.

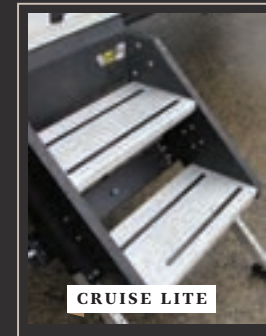
WHERE AFFORDABILITY AND LUXURY COLLIDE.



CRUISE LITE

Storage Matters.
Our under bed STOW AND GO storage system maximizes your storage space and makes preparation for camping a breeze. (varies by floorplan)

OTHER BRANDS



CRUISE LITE

Stairs matter.
Entering your coach should be safe and easy. Our double step system is unparalleled for safety and convenience.

OTHER BRANDS



Strong foundation matters.
JT-Strong Arms - Typically reserved for high-end fifth wheels, will make your trailer feel like it is sitting on a house foundation...Rock Solid Setup - Every time.

OTHER BRANDS

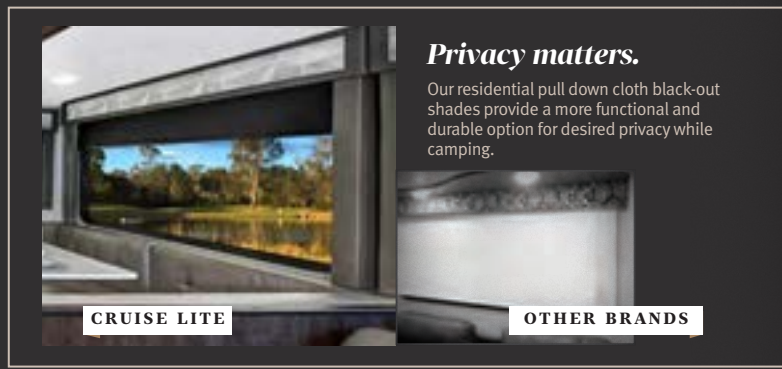
CRUISE LITE



CRUISE LITE

Refrigerators matter.
Stainless Steel 10.7 cu ft that is 78% larger than competition. Offering glass rather than wire shelves. Perfect for both dry camping and when plugged in.

OTHER BRANDS



CRUISE LITE



OTHER BRANDS

Privacy matters.
Our residential pull down cloth black-out shades provide a more functional and durable option for desired privacy while camping.

VISIT FORESTRIVERINC.COM/SALEM

TO EXPERIENCE COMPLETE STANDARDS & MUCH MORE

SPECIFICATION DEFINITIONS

GVWR (Gross Vehicle Weight Rating) - is the maximum permissible weight of the unit when fully loaded. It includes all weights, inclusive of all fluids, cargo, optional equipment and accessories. For safety and product performance do NOT exceed the GVWR.

GAWR (Gross Axle Weight Rating) - is the maximum permissible weight, including cargo, fluids, optional equipment and accessories that can be safely supported by a combination of all axles.

UVW (Unloaded Vehicle Weight)* - is the typical weight of the unit as manufactured at the factory. It includes all weight at the unit's axle(s) and tongue or pin and LP Gas. The UVW does not include cargo, fresh potable water, additional optional equipment or dealer installed accessories.

*Estimated average based on standard build optional equipment.

CCC (Cargo Carrying Capacity)** - is the amount of weight available for fresh potable water, cargo, additional optional equipment and accessories. CCC is equal to GVWR minus UVW. Available CCC should accommodate fresh potable water (8.3 lbs per gallon). Before filling the fresh water tank, empty the black and gray tanks to provide for more cargo capacity.

** Estimated average based on standard build optional equipment

Each Forest River RV is weighed at the manufacturing facility prior to shipping. A label identifying the unloaded vehicle weight of the actual unit and the cargo carrying capacity is applied to every Forest River RV prior to leaving our facilities.

The load capacity of your unit is designated by weight, not by volume, so you cannot necessarily use all available space when loading your unit.

THE SALEM LINE-UP



SALEM



SALEM CRUISE LITE



SALEM VILLA | VILLA ESTATE



SALEM HEMISPHERE

CUSTOMER SATISFACTION



www.ForestRiverBuyLocal.com

FREE MEMBERSHIP
to Forest River Owners' Group

www.forestrivermag.com



Learn More
Scan this barcode using a QR Reader on your smart phone to learn more about Forest River.



A Berkshire Hathaway company.

Forest River, Inc. 55470 C.R. 1 Elkhart, IN 46515 | (574) 533-5934
www.forestriverinc.com/Salem | www.forestriveraccessories.com



PRE-DELIVERY INSPECTION FACILITY

20,000 square feet of quality assurance. The bare essentials for a premium product. This state-of-the-art facility gives immediate daily feedback to production for quality assurance in every unit built.

24/7 EMERGENCY ROADSIDE ASSISTANCE WITH VEHICLE PURCHASE*

TOWING
JUMP-STARTS
TIRE CHANGES
FLUID DELIVERY
LOCKOUT
SERVICE

WINCH-OUT
MOBILE MECHANIC
TECHNICAL
SUPPORT
DEALER LOCATOR
SERVICES



*VALID FOR 1 YEAR FROM DATE OF PURCHASE

YOUR SALEM DEALER

2019